



In This Issue

President's Message	P. 1-2
2014 Golf Tournament Recap	P. 2-3
September 25 th Member Social	P. 4
Calendar of Events	P. 5
Photos from Recent Events	P. 6
AFE 33 Board of Directors	P. 7

President's Message

Dear Membership,

With summer now officially over, we look towards cooler weather, fall foliage and school back in session. We've had a great year to date with many memorable tours, technical sessions and a tremendous showing at our annual golf outing.

I'd like to take this opportunity to thank everyone who put forth a tremendous effort towards making our annual golf outing a great success. In particular, I'd like to thank Suzanne Grubis of Interior Solutions & Associates. Sue really is the one person who coordinates the efforts behind the scenes and ensures that the rest of us stay on task with our assignments. Without Sue, I don't believe we would have half the success we do with the annual golf outing. THANK YOU Sue!



I would also like to thank all of our sponsors and especially our Platinum Sponsors; Infrared Building and Power Services and Sprague Energy. Without sponsors we would not be able to continue the great tradition of providing financial assistance to those who are pursuing careers in the field of facilities engineering, they are our future. THANK YOU!

Looking forward, we still have some great tours coming up as well as our annual membership drive which will be held again at the Waterworks Museum on the Chestnut Hill Reservoir. For those of you have attended this with us in the past, or on your own, I am sure you will be registering early so as not to miss out on this great venue. For those who have never been to the museum, I encourage you to come and experience a trip back in time where our world was much more mechanized. You will be overwhelmed by the beautiful job the museum has done to restore and preserve some of Boston's great history. This facility is my all time favorite places we have visited to date.

(continued on next page)

President's Message, continued from previous page

Over my 6 years as a member of Boston Chapter 33, I have developed many close friendships and learned an enormous amount about the field in which I work. By being an "active" member you, too, will reap these rewards. Working on the Chapter Board, or on one of several committees, is a great way to maximize your membership and reap the rewards the AFE has to offer, whether it is the tours, networking opportunities, or staying on top of your professional development through CPMM or other offerings, I encourage you to get involved.

I look forward to seeing you all at our next or any future meetings.



Dean Vanasse
President, AFE Chapter 33 Boston
Boston Safety Training, Inc.
Phone 508.272.8815 Email dean@bostonsafetytraining.com

Golf Tournament Recap



by John Strobel, AFE 33 Secretary

We would like to thank all participants who attended and/or contributed to this year's Annual Leo J Monty Scholarship Golf Tournament and made it a huge success! **With your kind generosity, we raised \$10,000 that will go directly into the Scholarship Fund!** We could not have asked for better weather or better company. Nearly 140 people were in attendance for golf and dinner afterwards. We understand that there are many events held each summer and other ways to spend your time. We sincerely appreciate you being there with us supporting **the** AFE and the Leo J Monty Scholarship. It is your participation that again made this event an overwhelming success.

A great big thanks to our Platinum and Gold Sponsors: **Infrared, Sprague Energy; Mechanical Construction Services; FW Webb, and Barclay Water Management.** Also, special thanks to our beer cart and golf cart sponsors CG Mechanical, Aalanco Services, and BMI Mechanical. Thanks also to our raffle prize donors and hole sponsors: Boston Safety Training; Filter Sales & Service; Mass Maritime Academy; Victaulic; American D G Energy; Milwaukee Tool; Fitzmeyer & Tocci; F H Maroney; Daikin Applied; The Townsend Group; Aqua Laboratories, and Delande Electrical Supply.

(continued on next page)

Golf Tournament Recap, continued from previous page

For those who were unable to attend this year, we understand and missed you. We hope you will join us at the next one in June!

Leo J. Monty was a founding member of The Boston Plant Engineers Club which became AIPE (American Institute of Plant Engineers) and is now AFE (Association for Facility Engineering). Leo was truly dedicated to the field of Plant Engineering and promoted education and networking among his colleagues. In his honor, the Scholarship Fund issues scholarships to people pursuing degrees or certifications to advance their careers in Facility Engineering and Management as well as students pursuing studies in engineering related fields.

Scholarships for AFE Certification programs are awarded throughout the year and can be applied for at any time. Scholarships for college level courses are issued in June of each year and applications can be found on our website at: <http://afechapter33.org/leojmontyscholarship.html>

Thanks again to all who supported this event, and we look forward to seeing you all at future AFE events!

Connect With Us on Social Media

Learn more about Chapter 33 on our website and connect with your AFE colleagues on social media.

Like our page on Facebook and connect with other facility management professionals.



www.chapter33@afe.org



www.linkedin.com/groups?gid=2374807&trk=myg_ugrp_ovr



<https://www.facebook.com/afe.boston>

Member Social



AFE New England Regional Member Social
September 25, 2014

*Spend an evening with dinner in the Great Engine Hall
of this historic facility in Chestnut Hill, Massachusetts.*

DATE:	Thursday, September 25, 2014
TIME:	5:00 - 8:00 PM
LOCATION:	Metropolitan Waterworks Museum
COST:	\$35 per person

Guests Invited! Members are encouraged to bring spouses and prospective members. This event is limited to 125 participants. Please register early as we expect to sell out.

About the Waterworks Museum: The Waterworks Museum shares regional stories about clean water, health, people, brilliant engineers, and magnificent architecture. Visitors can explore the remarkable machinery, wonder at the massive wrenches that kept the pumps running, and marvel at the beautiful architecture.

The Waterworks Museum is located on the site of the original Chestnut Hill Reservoir and pumping station. By the 1880's, Boston's water system couldn't keep up with the rapid growth of the city and its water needs. Chestnut Hill was identified as the location for a new reservoir and main pumping station. The original station was built in 1887, but by the 1890's, it was clear that demand had quickly outstripped the ability to transport sufficient water. The need for more water resulted in the installation of increasingly powerful (and enormous!) pumping engines, which operated every day until the 1970's, when the site was taken offline, and Boston's water supply shifted to the Quabbin Reservoir. The Chestnut Hill Reservoir, however, is still used as a back-up source of water in case of emergencies.

[REGISTER NOW](#)



Calendar of Events

Details are posted on our website as they become available.

Thursday, September 25, 2014

Boston Waterworks Museum - Membership Social

Thursday, October 23, 2014

Haystack Observatory Tour & Dinner

Thursday, November 20, 2014

Lahey Clinic Cogen Plant Tour & Dinner

December 2014

No member meeting in December



AFE New England Region 8

CPMM Review Class

November 5, 6 and 7, 2014

Waltham, MA

[Learn more about the class.](#) [Register now.](#)

Recent Events

February 27, 2014 -

Technical Talk and
Dinner: SMARDT Chillers /
Pumps

March 28, 2014 -

Rolls
Royce Propeller Facility
Tour and Dinner

April 24, 2014 -

Harpoon
Brewery Tour and Dinner

May 22, 2014 -

HTP, Inc. Facility
Tour, Dinner & Technical Talk:
Heat Transfer Products

June 12, 2014 -

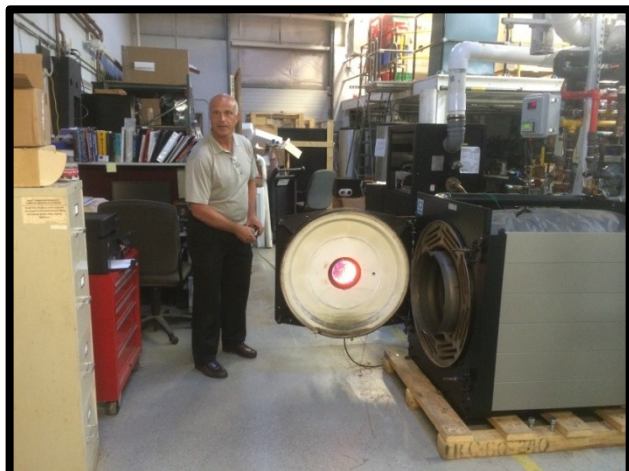
Mass. Maritime
Academy Tour

August 25, 2014 -

Annual Golf
Outing & Dinner

Bookmark the AFE 33 Events Calendar: <http://www.afechapter33.org/calendarofevents.html>

Photos from Recent Events: HTP Tour



Photos by John Strobel, AFE 33 Secretary

AFE Boston Chapter 33 Board of Directors



Officers

President

Dean Vanasse

Boston Safety Training

Phone: 508-272-8815

dean@bostonsafetytraining.com

Vice President

Daniel Mahr

Aalanco

Phone: 800-215-6698

dmahr@aalanco.com, dmahr@afechapter33.org

Treasurer & Membership Chair

Gregory Driscoll

Cushman Wakefield

Phone: 781-828-2857

Secretary

John Strobel

Victaulic

Phone: 617-448-3536

JohnStrobel@afechapter33.org

www.victaulic.com

Immediate Past President

Alan Ouellet

Filter Sales & Service, Inc.

Phone: 781-254-2442

aouellet@filtersales.com, aouellet@afechapter33.org

Directors

Paul Cantrell CE, CPE, CHFM

Concord Hospital

Phone: 603-227-7058

Stephen W. Nicholas, CPMM

Air Industries, Inc.

Phone: 978-682-9993

snicholas@airinds.com

Dean Larson, CPE

Membership & Golf Chair

Stu Peeke

BMI/Sealpro

Phone: 978-423-8400

stupeeke@comcast.net, stupeeke@afechapter33.org

Suzanne Grubis

Interior Solutions

Phone: 617-922-9852

suzanne.intsol@verizon.net, sgrubis@afechapter33.org

Michael DiMattia

Chiller Technology

Phone: 781-491-0910

michael@chillertechnology.com

Mark Clark, CPMM

Clark Consulting Services

Phone: 617-504-8125

George Howe (Missing from photo)

Massachusetts Maritime Academy

Former Chair, AFE Chapter 88, now merged into 33

ghowe@maritime.edu