



LED brightens your life



www.articlighting.com

2011-2012

Pag 1

LED Bulbs

D-BL-E14-1W3-CW/WW
D-BL-E27-21-CW
D-BL-PAR38-1W12-CW



Pag 2

LED Spot Light

D-BL-GU10-20-CW/WW
D-BL-GU10-MS24-CW/WW
D-BL-GU10-1W3-WW
D-BL-GU10-2W3-CW/WW
D-BL-MR16-MS24-CW/WW
D-BL-MR16-2W3-CW/WW



Pag 3

LED DownLight

D-DL-02CREE-3W3-RGB
D-DL-12-15-80-CW
D-DL-03-3W-WW
D-DL-PK-001EdisonRGB



Pag 4

LED Strip Kits

D-SETA-IP24-RGB
D-SETA-IP20-DIM
SET-A-PKEdisonRGB
D-SET-B-IP20-W



Pag 5

LED Strip Light

D-ST-5050-30-IP65-RGB
D-ST-5050-60-IP65-RGB
D-ST-96DIP
D-ST-5050-54-CH



Pag 6

LED Controllers

D-CN-44IR-RGB-W
D-CN-24IR-RGB
D-CN-44IR-RGB-BK
D-CN-DIM-01
D-CN-RF-70/35 700mA/350mA
D-CN-20RF-RGB
D-CN-251R-CH



Pag 7

RGB Amplifier

D-CN-AMP-A
D-CN-AMP-C



Pag 8

LED Light Bar

D-ST-5050-36-A
D-ST-5050-30-B
D-ST-3528-42-C



Pag 9

Power Supplies

D-PW-12V/150W-A
D-PW-12V/100W-A
D-PW-12V/60W-A
D-PW-12V/96W-B
D-PW-12V/60W-B
D-PW-12V/36W-B



LED Bulbs



E14 LED Candle light

Item Number: D-BL-E14-1W3-CW/WW

Light source: 3pcs 1W LEDs
Color: CW/WW
Power: 3W
Base: E14
Input voltage: 110-265VAC
Beam angle: 180 degrees
Luminous flux: CW(210lm)WW(188lm)
Dimension: D50mm x H110mm
Certification: CE and RoHS



E27 LED bulb

Item Number: D-BL-E27-21-CW

Light source: 24pcs SMD5050 LEDs
Color: CW
Power: 7W
Base: E27
Input voltage: 110-240VAC
Beam angle: 160 degrees
Luminous flux: CW(330lm)
Dimension: D60mm x H110mm
Certification: CE and RoHS



E27 LED PARlight

Item Number: D-BL-PAR38-1W12-CW

Light source: 12pcs 1W LEDs
Color: CW
Power: 12W
Base: E27
Input voltage: 110-240VAC
Beam angle: 45 degrees
Luminous flux: CW(720lm)
Dimension: D122mm x H123mm
Certification: CE and RoHS

LED brightens your life

Specifications subject to change without notice on all products



LED Spot Light



SMD5050 GU10 LED spotlight bulb

Item Number:
D-BL-GU10-MS24-CW/WW
 Light source: 24pcs SMD5050 LEDs
 Color: CW/WW
 Power: 6W
 Base: GU10
 Input voltage: 85-120VAC
 Beam angle: 120 degrees
 Luminous flux: CW(350lm)WW(384lm)
 Dimension: D50mm x H75mm
 Certification: CE and RoHS



SMD5050 GU10 LED spotlight bulb

Item Number:
D-BL-GU10-20-CW/WW
 Light source: 20pcs SMD5050 LEDs
 Color: CW/WW
 Power: 5W
 Base: GU10
 Input voltage: 85-120VAC
 Beam angle: 120 degrees
 Luminous flux: CW(280lm)WW(240lm)
 Dimension: D50mm x H56mm
 Certification: CE and RoHS



SMD5050 MR16 LED spotlight bulb

Item Number:
D-BL-MR16-MS24-CW/WW
 Light source: 24pcs SMD5050 LEDs
 Color: CW/WW
 Power: 6W
 Base: MR16
 Input voltage: 85-120VAC
 Beam Angle: 120 degrees
 Luminous flux: CW(320lm)WW(340lm)
 Dimension: D50mm x H70mm



3W GU10 LED spotlight bulb

Item Number:
D-BL-GU10-1W3-WW
 Light source: 3pcs 1W LEDs
 Color: WW
 Power: 3W
 Base: GU10
 Input voltage: 110-130VAC
 Beam angle: 38 degrees
 Luminous flux: CW(240lm)
 Dimension: D50mm x H52mm
 Certification: CE and RoHS



6W GU10 LED spotlight bulb

Item Number:
D-BL-GU10-2W3-CW/WW
 Light source: 3pcs 2W LEDs
 Color: CW/WW
 Power: 6W
 Base: GU10
 Input voltage: 110-130VAC
 Beam angle: 90 degrees
 Luminous flux: CW(350lm)WW(380lm)
 Dimension: D50mm x H88mm
 Certification: CE and RoHS



6W MR16 LED spotlight bulb

Item Number:
D-BL-MR16-2W3-CW/WW
 Light source: 3pcs 2W LEDs
 Color: CW/WW
 Power: 6W
 Base: MR16
 Input voltage: 110-130VAC
 Beam angle: 90 degrees
 Luminous flux: CW(350lm)WW(380lm)
 Dimension: D50mm x H90mm
 Certification: CE and RoHS

LED Downlight



9W LED Downlight

Item Number: D-DL-02CREE-3W3-RGB

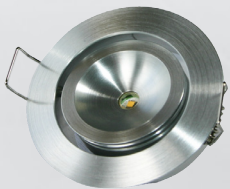
Light source: 3pcs 3W LEDs
Color: RGB
Power: 9W
Output current: 350mA
Input voltage: 100-240VAC
Beam angle: 45 degrees
Luminous flux: 880-1120lm)
Custom size: 50mm
Dimension: 75mm x H42mm
Certification: CE and RoHS



8W LED Downlight

Item Number: D-DL-12-15-80-CW

Light source: 1pc 8W LEDs
Color: Cold White
Power: 8W
Input voltage: 90-260VAC
Beam angle: 80 degrees
Luminous flux: 640lm)
Custom size: 122mm
Dimension: D132mm x H102mm
Certification: CE and RoHS



3W LED Downlight

Item Number: D-DL-03-3W-WW

Light source: 1pc 3W LEDs
Color: Warm White
Power: 3W
Output current: 700mA
Input voltage: 100-240VAC
Beam angle: 120 degrees
Luminous flux: 120lm)
Custom size: 44mm
Dimension: D52mm x H18mm
Certification: CE and RoHS



3W LED Puck light

Item Number: D-DL-PK-001EdisonRGB

Light source: 3pcs 1W LEDs
Color: RGB
Power: 3W
Puck light
Input voltage: 12-24V
Beam angle: 120 degrees
Luminous flux: 190-235lm
Dimension: D70mmx H13.5mm
Certification: CE and RoHS

LED brightens your life

Specifications subject to change without notice on all products

LED Kits



5M LED Strip RGB Kit

Item Number: D-SETA-IP24-RGB

LED Qty: 30pcs SMD 5050 LEDs per meter
Color: RGB
Power: 7.2W/M (36W)
Output current: 700mA
Voltage: 12VDC
IP Rate: Non Waterproof
Dimension: L5000 x W8 x H2.5mm
Packing: 5M per reel
Dimmer: 24 Keys IR remote controller
Package contains: LED strip+power supply+ controller . Adaptor: 12V 36W
Certification: CE and RoHS



5M LED Strip Dimmer Kit

Item Number: D-SETA-IP20-DIM

LED Qty: 30pcs SMD 5050 LEDs per meter
Color: White
Power: 7.2W/M (36W)
Output current: 700mA
Voltage: 12VDC
IP Rate: Non Waterproof
Dimension: L5000 x W8 x H2.5mm
Packing: 5M per reel
Dimmer
Package contains: LED strip+power supply+ Inline dimmer. Adaptor: 12V 36W
Certification: CE and RoHS



LED Puck Light Kit

Item Number: SET-A-PKEdisonRGB

Light source: 3pcs 1W LEDs (per unit)
Color: RGB
Power: 3.6W
Puck light
Input voltage: 12-24V
Beam angle: 120 degrees
Luminous flux: 190-235lm
Dimension: D70mmx H13.5mm(per unit)
Certification: CE and RoHS



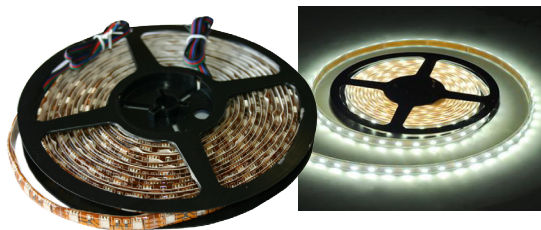
1M LED Strip

Item Number: D-SET-B-IP20-W

LED Qty: 30pcs SMD 3528 LEDs per meter
Color: White
Power: 1.5W/M
Output current: 140mA
Voltage: 12VDC
IP Rate: Non Waterproof
Dimension: L1000 x W8 x H2.5mm
Package contains: LED strip+adaptor
Certification: CE and RoHS

LED brightens your life

LED Strip Light



IP65 Waterproof LED Strip Light

Item Number: D-ST-5050-30-IP65-RGB

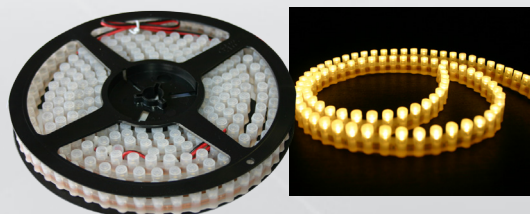
LED Qty: 30pcs SMD 5050 LEDs per meter
Color: RGB
Power: 7W/M (36W)
Voltage: 12VDC
Dimension: L5000 x W12 x H2.5mm
Packing: 5M per reel
Each 3 LED is cuttable for 12V strips
Waterproof rating: IP65
Certification: CE & RoHS



IP65 Waterproof LED Strip Light

Item Number: D-ST-5050-60-IP65-RGB

LED Qty: 60pcs SMD 5050 LEDs per meter
Color: RGB
Power: 15W/M (75W)
Voltage: 12VDC
Dimension: L5000 x W12 x H2.5mm
Packing: 5M per reel
Each 3 LED is cuttable for 12V strips
Waterproof rating: IP65
Certification: CE and RoHS



IP67 Waterproof LED Strip Light

Item Number: D-ST-96DIP

LED Qty: 96pcs Dip leds
Color: Warm White
Power: 7.86W/M
Voltage: 12VDC
Waterproof rating: IP67
Certification: CE and RoHS



Non Waterproof LED Strip Light

Item Number: D-ST-5050-54-CH

(Use only with CN-25IR-CH)
LED Qty: 54pcs SMD 5050 LEDs per meter
Color: chasing RGB
Power: 14W/M(70W)
Voltage: 12VDC
Dimension: L2500 x W12 x H3 mm
Packing: 5M per reel
IP Rate: Non Waterproof
Certification: CE and RoHS

LED brightens your life



LED Controllers



Infrared RGB Controller

Item Number: D-CN-44IR-RGB-W

44 key infrared RGB LED Controller
 For LED fixtures and RGB strips can be set to different static color or different adjustable flashing and fading patterns
 Voltage:DC12V
 Output: 3 channels
 Connection mode: common anode
 Controller dimension: L63 x W35 x H22mm
 Remote dimension: L125 x W56 x H7mm
 Net weight: 60g
 Gross weight: 90g
 Static power consumption: <1W
 Output current: <2A(each channel)
 Power output:12V: <72W

Item Number: D-CN-24IR-RGB

24 key infrared RGB LED Controller
 For LED fixtures and RGB strips can be set to different static color or different adjustable flashing and fading patterns
 Voltage:DC12V
 Output: 3 channels
 Connection mode: common anode
 Dimension: L62 x W35 x H23mm
 Net weight: 50g
 Gross weight: 80g
 Static power consumption: <1W
 Output current: <2A(each channel)
 Power output:12V: <72W,



Infrared RGB Controller

Item Number: D-CN-44IR-RGB-BK

44 key infrared RGB LED Controller
 For LED fixtures and RGB strips can be set to different static color or different adjustable flashing and fading patterns
 Voltage:DC12V
 Output: 3 channels
 Connection mode: common anode
 Controller dimension: L63 x W35 x H22mm
 Remote dimension: L125 x W56 x H7mm
 Net weight: 60g
 Gross weight: 90g
 Static power consumption: <1W
 Output current: <2A(each channel)
 Power output:12V: <72W
 Certification: CE and RoHS



Infrared RGB Controller

Item Number: D-CN-DIM-01

Touch dimmer
 Applications: for LED strips, dimmable LED bulbs and LED downlights
 Voltage:DC12V - 24V
 Output: 1 channel
 Current: 8A
 Dimension: L89 x W59 x H35mm
 Power output:12V: <96W, 24V: <192W
 Certification: CE and RoHS



Touch LED Dimmer

Item Number: D-CN-DIM-03

LED dimmer
 Applications: for LED strips, dimmable LED bulbs and LED downlights
 Voltage:DC12V
 Output: 1 channel
 Net weight: 100g
 Gross weight: 130g
 Current: 8A
 Dimension: L110 x W56 x H34mm
 Power output :12V: <96W
 Certification: CE and RoHS



Wireless RF Controller

LED brightens your life

LED Controllers



Wireless RF Controller

Item Number: D-CN-RF-70/35 700mA/350mA

Applications: for LED strips, dimmable LED bulbs and LED downlights
 Voltage:DC12V
 Output: 3 channels
 Connection mode: common anode
 Controller dimension: L130 x W55 x H25mm
 Static power consumption: < 1W
 Output current: 4A(each channel)
 Power output: 12V:<144W
 Certification: CE and RoHS



RF Controller

Item Number: D-CN-20RF-RGB

infrared RGB controller
 For LED fixtures and RGB strips can be set to different static color or different adjustable flashing and fading patterns
 Voltage:DC12V
 Output: 3 channels
 Connection mode: common anode
 Transmission/receiving frequency: 433Mhz
 Remote distance: 10~15m
 Controller dimension: L128 x W64 x H24mm
 Remote dimension: L85 x W52 x H7mm
 Net weight: 165g
 Gross weight: 205g
 Static power consumption: < 1W
 Output current: <4A(each channel)
 output power:12V:<144W
 Certification: CE and RoHS



Infrared RGB Controller

Item Number: D-CN-25IR-CH

25 key Infrared chasingcontroller (work with D-ST-5050-54-CH strip)
 Voltage:DC12V
 Output: 9 channels
 Connection mode: common anode
 Controller dimension: L70 x W45 x H30mm
 Remote dimension: L85 x W52 x H7mm
 Net weight: 90g
 Gross weight: 120g
 Static power consumption: < 1W
 Output current: <0.5A(each channel)
 output power:12V:<54W
 Certification: CE and RoHS

LED brightens your life

LED Light Bar

RGB Amplifier



RGB Amplifier

Item Number: D-CN-AMP-A

Voltage: DC12-48V
 Output: 3 channels
 Output current: 350mA(each channel)
 Output power: 12V: <12.6W, 24V: <25.2W
 Connection the number of load:12V: 1~3LED/1W 24V:1~7LED/1W
 IP Rate: Non Waterproof
 Controller dimension: L105 x W65 x H25mm
 Certification: CE and RoHS



5050SMD LED light Bar

Item Number: D-ST-5050-36-A

LED Qty: 36pcs SMD 5050 LEDs
 Color: White: 6000-7000K
 Power: 8.64W
 Voltage: 12VDC
 Beam angle: 120degrees
 IP Rate: Non Waterproof
 Dimension: L500 x W15 x H21mm
 Material: Fibre PCB+ aluminum
 Certification: CE and RoHS



Waterproof 5050SMD LED light Bar

Item Number: D-ST-5050-30-B

LED Qty: 30pcs SMD 5050 LEDs
 Color: White: 6000-7000K
 Power: 7.2W
 Voltage: 12VDC
 Beam angle: 120degrees
 Waterproof rating: IP67
 Dimension: L500 x W24 x H10mm
 Material: Fiber PCB+ aluminum
 Certification: CE and RoHS



RGB Amplifier

Item Number: D-CN-AMP-C

Voltage: DC12-48V
 Output: 3 channels
 Output current: 350mA(each channel)
 Output power: 12V: <12.6W, 24V: <25.2W
 Connection the number of load:12V: 1~3LED/1W 24V:1~7LED/1W
 IP Rate: Non Waterproof
 Controller dimension: L105 x W65 x H25mm
 Certification: CE and RoHS



Inter-connectable 3528 LED light Bar

Item Number: D-ST-3528-42-C

LED Qty: 42pcs SMD 3528 LEDs
 Color: White: 6000-7000K
 Power: 3W
 Voltage: 12VDC
 Beam angle: 90degrees
 IP Rate: Non Waterproof
 Dimension: L300 x W25 x H9mm
 Material: Fiber PCB+ aluminum
 Certification: CE and RoHS

LED brightens your life

Power Supplies



Waterproof 150W Power Supply

Item Number: D-PW-12V/150W-A

Waterproof 150W Power supply
 Input Voltage range(v): AC 170-250V 50/60HZ
 Max output power: 150W
 Output voltage: 12V (0.5V tolerance)
 Dimension: L235 x W132 x H65mm
 Housing material: Aluminum sealed
 Electric wire gauge: Input/output with SVT/VDE,
 two output wire, 18#X2C length 20cm
 Weight: 2,350g
 Waterproof rating: IP67
 Certification: CE & RoHS



96W Power Supply

Item Number: D-PW-12V/96W-B

Non-waterproof 96W Power supply
 Input Voltage range(v): AC 100-240V 50/60HZ
 Max output power: 96W
 Output voltage: DC 12V
 Protection: 120%min. over current
 Protection: 120%min. short protection load
 Operation temperature: 0°C~40 °C
 Certification: CE & RoHS



60W Power Supply

Item Number: D-PW-12V/60W-B

Non-waterproof 60W Power supply
 Input Voltage range(v): AC 100-240V 50/60HZ
 Max output power: 60W
 Output voltage: DC 12V
 Protection: 120%min. over current
 Protection: 120%min. short protection load
 Operation temperature: 0°C~40 °C
 Certification: CE & RoHS



Waterproof 100W Power Supply

Item Number: D-PW-12V/100W-A

Waterproof 100W Power supply
 Input Voltage range(v): AC 170-250V 50/60HZ
 Max output power: 100W
 Output voltage: 12V
 Dimension: L240 x W68 x H44mm
 Housing material: Aluminum sealed
 Electric wire gauge: Input/output with SVT/VDE,
 two output wire, 18#X2C length 20cm
 Weight: 1200g
 Waterproof rating: IP67
 Certification: CE & RoHS



36W Power Supply

Item Number: D-PW-12V/36W-B

Non-waterproof 36W Power supply
 Input Voltage range(v): AC 100-240V 50/60HZ
 Max output power: 36W
 Output voltage: DC 12V
 Protection: 120%min. over current
 Protection: 120%min. short protection load
 Operation temperature: 0°C~40 °C
 Certification: CE & RoHS



Waterproof 60W Power Supply

Item Number: D-PW-12V/60W-A

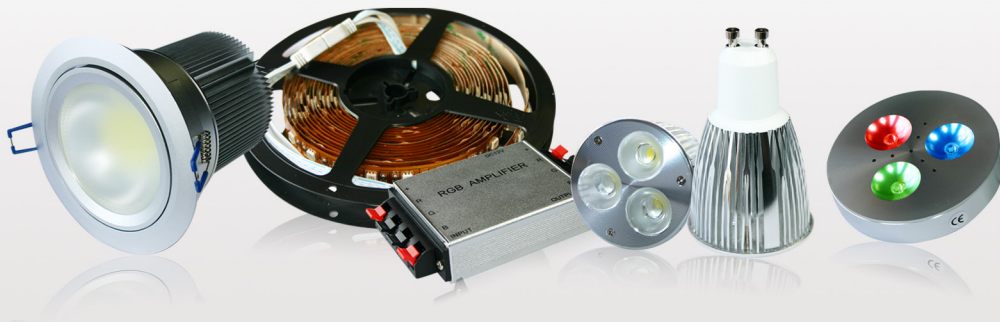
Waterproof 60W Power supply
 Input Voltage range(v): AC 170-250V 50/60HZ
 Max output power: 60W
 Output voltage: DC 12V
 Dimension: L180 x W68 x H53mm
 Housing material: Aluminum sealed
 Electric wire gauge: Input/output with SVT/VDE,
 two output wire, 18#X2C length 20cm
 Weight: 800g
 Waterproof rating: IP67
 Certification: CE & RoHS

LED brightens your life

Artic[®] decor[™]

LED brightens your life

www.articlighting.com



All Specifications subject to change without notice on all products